

Information in this document is subject to change without notice. No part of this document may be reproduced or transmitted in any form or by any means for any purpose without the express written permission of HT OMEGA, Inc.

haloUSB® and HT OMEGA logo are trademarks of HT OMEGA. Microsoft, DirectSound3D, Microsoft Windows are trademarks of Microsoft Corporation. Other company and product names may be trademarks of the respective companies with which they are associated.

ASIO is a trademark and software of Steinberg Media Technologies GmbH.

© 2016 HT OMEGA, Inc.

The product described in this manual has been developed and produced by HT OMEGA, Inc. The information furnished in this document is provided for the customers' reference. However, HT OMEGA, Inc. assumes no liability for any incidental, consequential and certain other damages that arise out of or relating in any way to the software or hardware device.

HT OMEGA, INC.

1912 Augusta Ct. Ontario, CA 91761 USA.

Webservice: <http://www.htomega.com>

Support: help@htomega.com

Table of Contents

1. Instruction	4
2. Installing H/W, S/W, and Speakers	5
2.1 Connectors.....	5
2.2 LED display.....	6
2.3 Volume Controller	6
2.4 halo USB Software.....	7
4. Support / Contact	9

1. Introduction

Thank you for choosing an HT OMEGA audio solution. This quick start guide will guide you in connecting and configuring the halo USB.

The halo USB supports 16/24 Bit playback and DSD 2.8 KHz (DSD64) / 5.6 KHz (DSD128) files. The headphone output connector supports up to 600ohm headphones.

What's in the box?

You should have received the following with your halo USB:

- halo USB
- Drivers CD
- USB cable
- Optical cable adapter (square to round)

Specifications

(1) Sound Processor

- Main : X-Core microprocessor (U8A)
- DAC : CS4398 (120dB)

(2) Interface

- USB2.0 highSpeed (USB version 2.0)
- Headphone Output (supports up to 600ohm impedance headphone)
- AUX/Optical combo connector
- Full Metal Case to reduce external noise signals

(3) Supported OS

- Windows XP, Windows 7, Windows8, Windows8.1, Windows10 with driver
- Natively supported by Apple Mac OS X
- Natively supported by Linux Kernel

(4) Supported Sample Rates

- 44.1, 48, 88.2, 96, 192Khz
- 16/24bit

(5) Power

- USB BUS Power

2. Installing H/W, S/W, and Speakers

2.1 Connectors



Front

- 1. Headphone (3.5mm Stereo-jack):** Connect headphone or earphone. **Please do not connect speaker to headphone connector.**



Rear

1. **AUX / OUT (3.5mm Stereo-jack):** Combination port for connecting to speakers or other external digital system. For square type optical cable digital connection, use the supplied optical cable adapter.

Note: Optical digital output supports PCM (2ch) digital output ONLY. It does not support 7.1ch and 5.1ch digital output such as Dolby TrueHD, DTS-HD Master Audio, Dolby Digital and DTS.

2. **USB :** Connect to USB 2.0 port of PC with bundled USB cable.

2.2 LED display

Upper side LED indicates current sampling frequency rate while file is playing.

PCM :

44.1kHz (Red), 48kHz (Green), 88.2kHz (Yellow-Green), 96kHz (Purple),
176.4kHz (Sky Blue), 192kHz (Blue)

DSD : DSD64/128 (White)

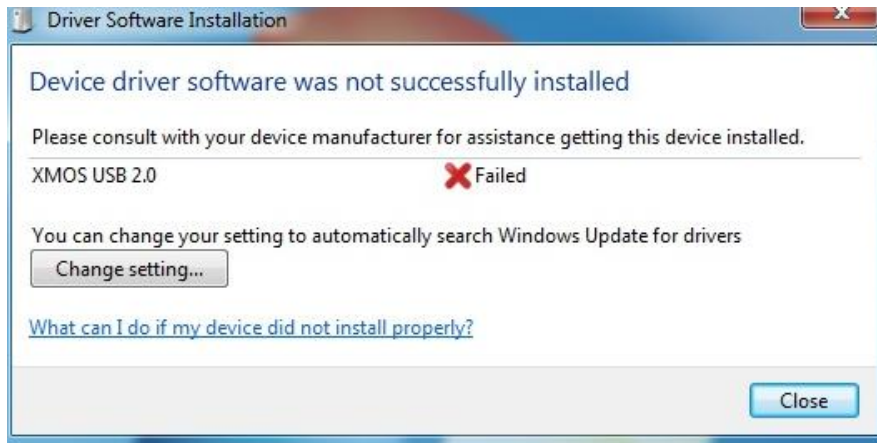
2.3 Volume Controller

A digital volume controller is located on the side panel. The previous volume level is loaded automatically.

2.4 halo USB Software

(1) Installing the drivers and software

- ① Turn on PC. Windows will automatically detect **XMOS USB2.0** and prompt the **Installing device driver software**. Please wait until Windows Setup Wizard stops.



- ② Insert installation CD into the CD/DVD drive. Installation CD will launch automatically only if the Auto-Insert Notification option is enabled for your CD/DVD drive. If the installation menu does not appear after inserting the installation CD into your CD/DVD drive, browse to the drive letter that contains the installation CD and double-click on the CD/DVD drive icon to explore it. Search for and run "**SETUP.EXE**" and proceed to the next step.
- ③ When the installation menu appears, select "**Next**". Follow the instructions that appear during the installation selecting the options that best match your setup.
- ④ After installing driver, please click "Finish" button for closing setup wizard.

Note: The driver will not start installation while Windows Hardware Setup Wizard is running. Please wait until Windows hardware Wizard stops.

(4) TO UNINSTALL "halo USB" driver.

- ① Open the Windows Control Panel (Start => Settings => Control Panel).
- ② Open the Add/Remove Programs (XP) or Programs and Features (Windows7 and later) in Windows Control Panel. Select "USB Audio 2.0 Stereo Driver" and click uninstallation.
- ③ To complete the uninstall process, Windows needs to be restarted. Select **Yes, I want restart my computer now** then press **Finish**. (Please do not skip restart now before installing updated driver)

4. Support / Contact

HT OMEGA offers various resources to provide customer support. Please visit our website <http://www.htomega.com> to access our customer service section. The latest FAQ's, drivers, product documentation and applications can be found on the website, along with any new product development and information.

Thank you for choosing an HT OMEGA product. We look forward to providing you with the highest quality products and service.

LIMITED WARRANTY

HT OMEGA, Inc. warrants to the original purchaser only that the hardware product will be free of defects in materials and workmanship for a period of twelve (12) months from the date of purchase. HT OMEGA, Inc. will, at its sole discretion, repair or replace the product if it is found to be defective. This warranty does not cover a product failure that is the result of misuse, abuse, modification, misapplication, or normal wear and tear. No claim is made for merchantability or fitness for any purpose. In no event will HT OMEGA, Inc. be liable for any direct, indirect, consequential, or incidental damages arising out of the use of this product. In no event will HT OMEGA's liability exceed the purchase price you paid for the product.

The purchaser must contact HT OMEGA, Inc or its regional representative to receive prior approval before returning a faulty unit. All such returns must be shipped to HT OMEGA, Inc in the original packaging including all accessories (documents, cables, software, etc.) along with the original sales receipt. Any costs associated with the return/shipping/insuring the package are the sole responsibility of the end-user. Shipments without freight prepaid will not be accepted. If the returned product is deemed to be defective, the repaired or replacement product will be returned at no extra charge via the carrier chosen by HT OMEGA, Inc.



NOTE: This equipment has been tested and found to comply with the limits for a Class B digital device, pursuant to part 15 of the FCC Rules. These limits are designed to provide reasonable protection against harmful interference in a residential installation.

This equipment generates, uses and can radiate radio frequency energy and, if not installed and used in accordance with the manufacturer's instructions, may cause harmful interference to radio communications. However, there is no guarantee that interference will not occur in a particular installation. If this equipment does cause harmful interference to radio or television reception, which can be determined by turning the equipment off and on, the user is encouraged to try to correct the interference by one or more of the following measures:

- Reorient or relocate the receiving antenna.
- Increase the separation between the equipment and receiver.
- Connect the equipment into an outlet on a circuit different from that to which the receiver is connected.
- Consult the dealer or an experienced radio/TV technician for help.

CAUTION : Changes or modifications not expressly approved by the manufacturer responsible for compliance could void the user's authority to operate the equipment.

